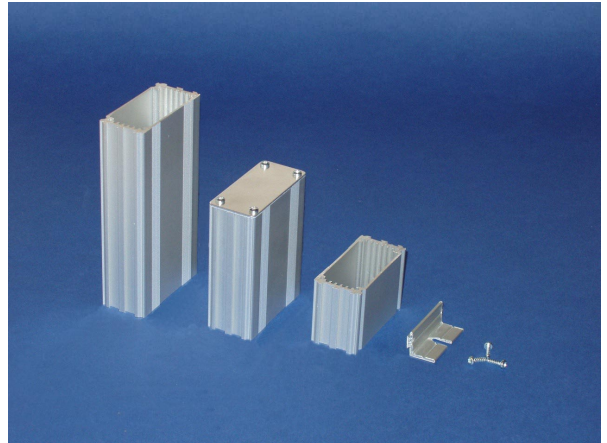


E-Case A

Silver or black anodized **aluminium extruded box section** to take 55 x 40mm, 55 x 80mm or 55 x 120mm circuit boards. Ideal for small circuits, R.F. amplifiers etc. The maximum height of components on a board mounted in the bottom slot is 18mm/20mm depending on orientation. This box features dovetail slots down the side which accept a Linc-Lug mounting bracket to facilitate **surface mounting**. Optional gaskets allow **waterproofing**. One side of the box features two sets of appearance enhancing grooves. Between the sets of grooves is a shallow (0.5mm deep) recess which could be used for a label.



This is the smallest in a series of sections which include **E-Case B**, **E-Case C** and **E-Case D**.

Length Tolerance: Nominal length -0mm/+1mm e.g. EAS 40 is not shorter than 40mm and not longer than 41mm.

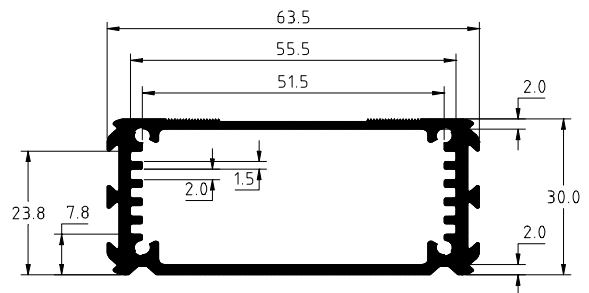
Non-Standard Lengths: Available. See separate datasheet.

Material: Aluminium 6063 T6 (HE9).

Finish: Silver anodized 5 µm thickness to BS 1615 - can be painted directly if required. The inside and cut ends are not anodized. Black Anodized 20 µm thickness, the inside and ends are anodized.

Weight: 1.0 Kg/m.

Perimeter: 220mm outside, 217mm inside.



Extrusion Order Codes:

Length	Black	Silver
40mm	EAB 40	EAS 40
80mm	EAB 80	EAS 80
120mm	EAB 120	EAS 120

Screw ports: Nominal diameter 2.7mm to take a No.4 self tapping screw with a 3mm major diameter of a type normally used for plastic. They are not suitable for ordinary self- tapping screws that have a 2.9 mm diameter with a wide tolerance. The screw ports can be threaded M3 using a thread-rolling tap, but a thread cutting tap will make a weak thread. Alternatively an M3 thread-forming screw can be used to roll its own thread.

End plate: End plate A is size 63.5 x 29.5 x 1.5mm to suit the A profile of the E-Case range of extruded enclosures. This includes both standard enclosures and non-standard lengths. The end plate is available in three finishes, black anodized, silver (clear) anodized and natural.

Natural end plates are anodizing grade and have a removable plastic coating on one side to prevent unwanted scratches prior to application. Initially, natural end plates will look the same as silver anodized, but over time will become dull or corrode if used in an application without surface protection. They would be an ideal starting point if a paint or alchrom finish were required. Silver anodized end plates are intended as partners for EAS (silver) electronic enclosures and black anodized end plates are intended as partners for EAB (black) electronic enclosures.

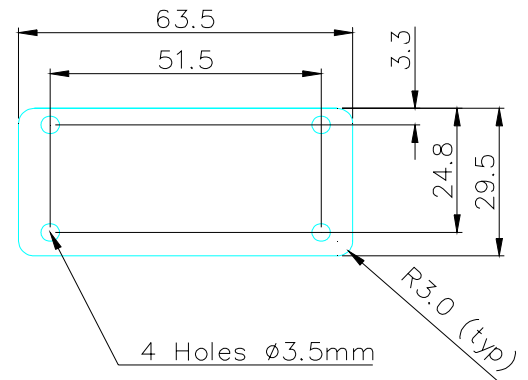
Application Information: The end plates are made using a 'pierce and blank' tool and therefore have a front with rounded edges and a back with square edges.

The screw holes in the end plate are symmetrical about a vertical centre line but lie closer (at 3.5mm) to the top than the bottom. This conforms to the geometry of the E-Case enclosure. They are designed to lie flush with the enclosure top and bottom and overlap the dovetails on the sides. Any Linc-lug inserted in a dovetail will be retained by the end plates.

Material of end plate: Aluminium J57S or 5251 H22.

Weight of end plate: PAN1, PAS1, PAB1: 7.5g

End Plate A: PAN 1, PAB 1, PAS1



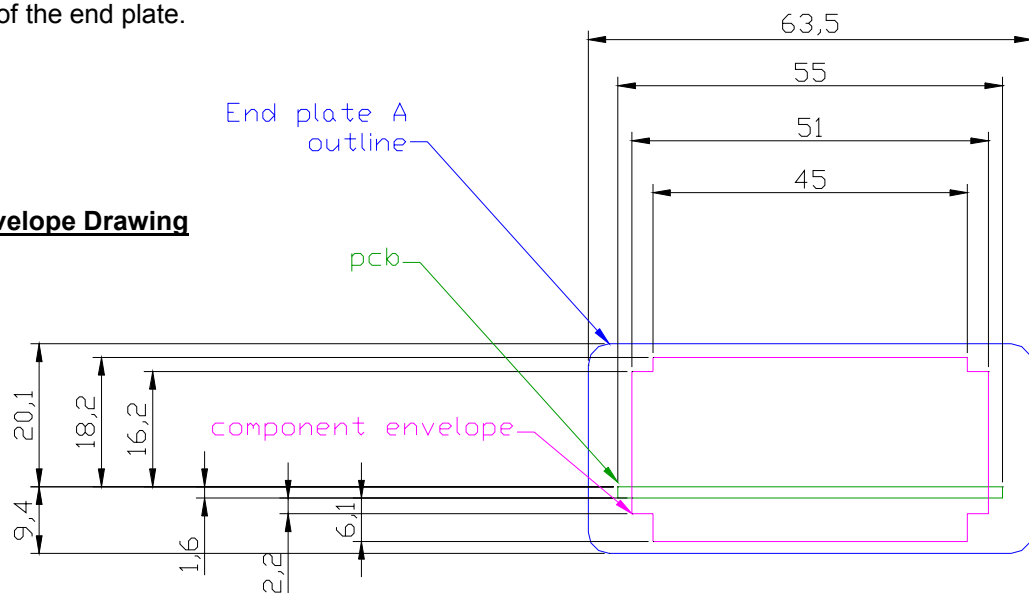
End Plate Order Codes:

Size	Black	Silver	Natural
A	PAB 1	PAS1	PAN 1

The envelope drawing shows the relationship between three things:

1. The circuit board in the bottom slot of the enclosure.
2. The envelope within which components must be placed.
3. The outside of the end plate.

E-Case A Envelope Drawing

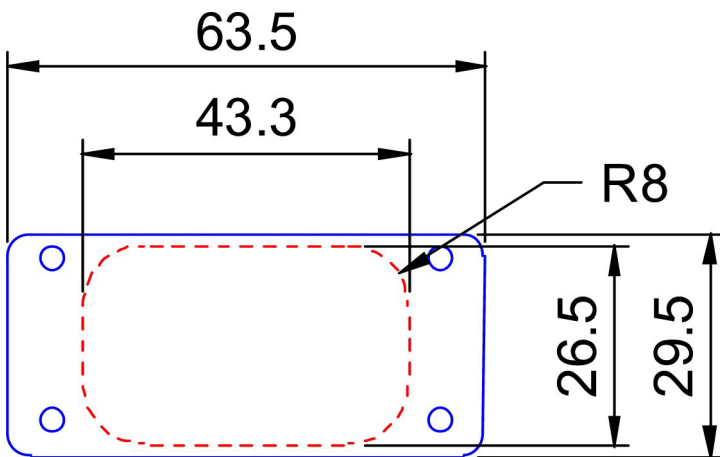


Accessories:

Bezel – Optional black ABS plastic bezel renders cosmetic improvement for E-Case A. It fits over the end plate and conceals the edges. Screws pass through the bezel as well as the end plate. Inserts conceal the heads of the screws. The bezel is particularly suited to concealing the edges of self-adhesive polycarbonate labels or membrane panels fitted on top of the end plate. Order Code: ZAB1

The bezel outline drawing shows the central area of the end plate (dotted line) not covered by the plastic of the bezel.

E-Case A Bezel Outline Drawing



E-Case A Bezel on EAB80



Gasket set – comprises 2 gaskets and 8 washers to optionally fit under screw heads. Washers increase rating from IP65 to IP66. Order Code: GEA1. Full details on E-Case Accessories datasheet.

Linc-Lugs – Silver Order Code: LSS 40 (40mm), LSS 80 (80mm); Black Order Code LSB40 (40mm), LSB80 (80mm). Full details on E-Case Accessories datasheet.

Screws - No.4 x 3/8" Plastite™ posi-pan self-tapping screws: Silver Order Code: SC8 (pack of 8), SC400 (pack of 400). Black Order Code: SCB8 (pack of 8), SCB400 (pack of 400).

M3 x 10 TORX™ thread-forming screws. Silver Order Code: SCT8 (pack of 8), SCT400 (pack of 400). Black Order Code: SCTB8 (pack of 8), SCTB400 (pack of 400).

Plastite™ is a trademark of Research Engineering and Manufacturing, Inc. TORX™ is a trademark of Textron Inc. Product and data subject to change without notice. User knows application and must determine fitness for purpose and appropriateness of advice verbal or written. See terms and conditions of sale. © Lincoln Binns Ltd. 1999, 2000, 2001, 2002, 2003, 2004, 2005.