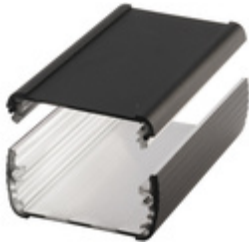


ABPH 600-1000



Alubos 600
Enclosure profiles, horizontally-divided

Order no.: 84066001

Colour of enclosure group

Black, similar to RAL 9005; special colours on request

Protection class

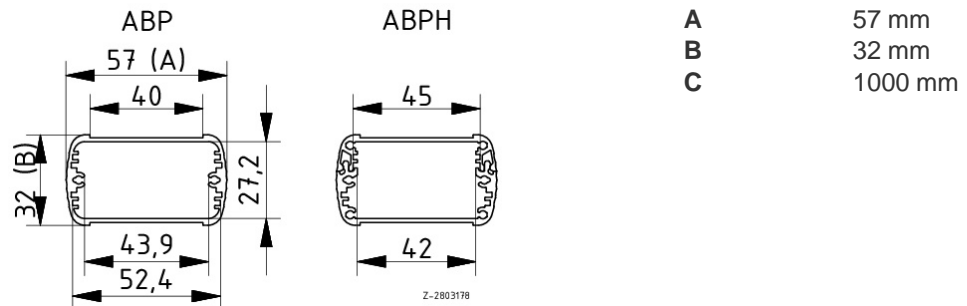
ABP, ABPH: up to IP 65/DIN EN 60529; ABPU: IP 40/DIN EN 60529

Enclosure material

Extruded profiles: Al Mg Si 0.5 powder-coated; diecast lid: GB Al Si 12, powder-coated; seal: TPE; for details see Technical Information

Scope of delivery: Enclosure profile, two parts including profile seal

Note: C = profile length, special lengths on request.



Technical drawings

Catalogue drawing in DXF format:
[84066001_ABPH-600-1000.dxf](#) (3.3 MB)
Catalogue drawing in PDF format:
[84066001_ABPH-600-1000.pdf](#) (84 KB)
3D product data in STEP format:
[Registration necessary](#)
Basic drawing for processing work:
[84066001_ABPH-600-1000-G.dxf](#) (280 KB)

Assembly instructions

[Alubos-ABPH-....-....pdf](#) (124 KB)
[Alubos-ABM-....-SAL\(-BE\).pdf](#) (69 KB)
[Alubos-AB-WL-..pdf](#) (195 KB)
[Alubos-AB-....-HS.pdf](#) (67 KB)

Chapter download

[Alubos_GB.pdf](#) (865 KB)

* = Available on request