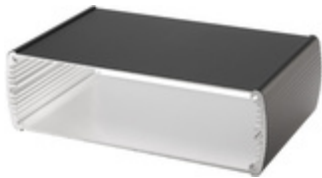


# ABP 1600-0150



Alubos 1600  
Enclosure profiles, closed

**Order no.: 84160150**

**Colour of enclosure group**

Black, similar to RAL 9005; special colours on request

**Protection class**

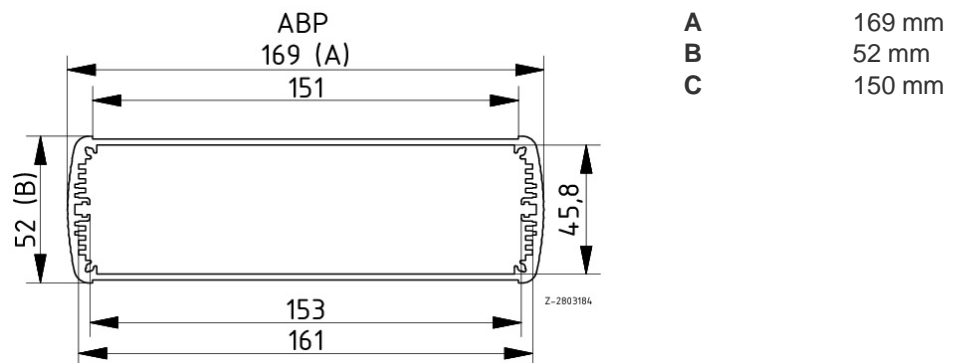
ABP, ABPH: up to IP 65/DIN EN 60529; ABPU: IP 40/DIN EN 60529

**Enclosure material**

Extruded profiles: Al Mg Si 0.5 powder-coated; diecast lid: GB Al Si 12, powder-coated; seal: TPE; for details see Technical Information

Scope of delivery: Enclosure profile

Note: C = profile length, special lengths on request.



**Technical drawings**

3D product data in STEP format:

[Registration necessary](#)

Basic drawing for processing work:

[84160150\\_ABP-1600-0150-G.dxf](#) (316 KB)

Catalogue drawing in DXF format:

[84160150\\_ABP-1600-0150.dxf](#) (716 KB)

Catalogue drawing in PDF format:

[84160150\\_ABP-1600-0150.pdf](#) (60 KB)

**Assembly instructions**

[Alubos-ABPH-....-....pdf](#) (124 KB)

[Alubos-ABM-....-SAL\(-BE\).pdf](#) (69 KB)

[Alubos-AB-WL-..pdf](#) (195 KB)

[Alubos-AB-....-HS.pdf](#) (67 KB)

**Chapter download**

[Alubos\\_GB.pdf](#) (865 KB)

\* = Available on request